



Precise BioMatch™ Logon for Windows 7 - Manual

1.x



The information in this manual is protected by copyright and may not be reproduced in any form without written consent from Precise Biometrics. The information in this manual is subject to change without notice.

Precise Biometrics shall not be liable for any technical or editorial errors herein, nor for incidental or consequential damages resulting from the use of this manual.

This manual is published by Precise Biometrics, without any warranty.

Copyright © Precise Biometrics AB, 2010.

Other product and company names mentioned herein may be trademarks of their respective owners.

All rights reserved. January 2010.

1	SYSTEM REQUIREMENTS.....	4
2	INSTALLATION.....	5
3	FINGERPRINT REGISTRATION	5
4	USING YOUR FINGERPRINT.....	10
4.1	First Time Usage	10
4.2	Logon and Unlock	13
5	FINGERPRINT REMOVAL	14
6	UNINSTALLATION.....	17
7	TROUBLESHOOTING.....	17
7.1	Registering the same fingerprint twice.....	17
7.2	Why isn't my device available?	18
7.3	No sensor attached	18
8	SUPPORT.....	19

1 SYSTEM REQUIREMENTS

- Windows 7 or Windows 2008 Server R2 (x86 or x64)
- Fingerprint device compliant with Windows Biometric Framework (WBF)

2 INSTALLATION

The Precise BioMatch™ Logon for Windows 7 is supplied as a Windows Installer program. Simply execute the msi file to install the necessary files to the target computer:

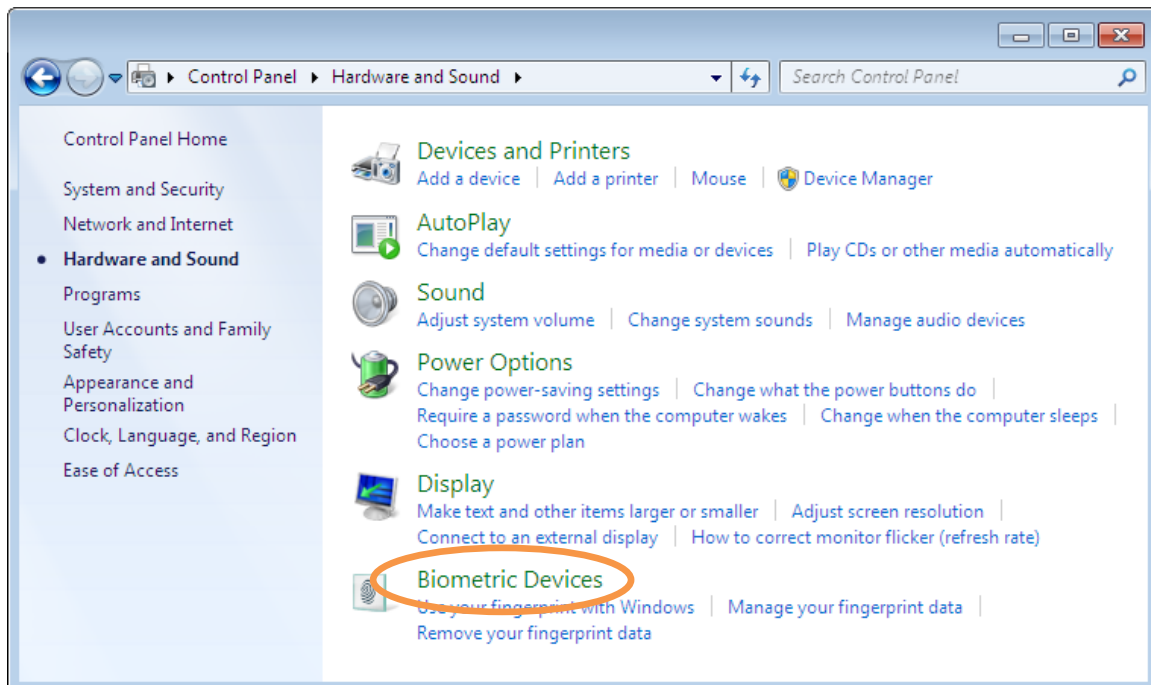
1. Double-click pbwin7wbf.msi
2. Complete the installation wizard
3. Register your fingers and start using your fingerprints as your Windows credential

Note that Precise BioMatch™ Logon for Windows 7 will be configured as the global biometric provider on the computer. Previously installed biometric providers will automatically be removed or disabled.

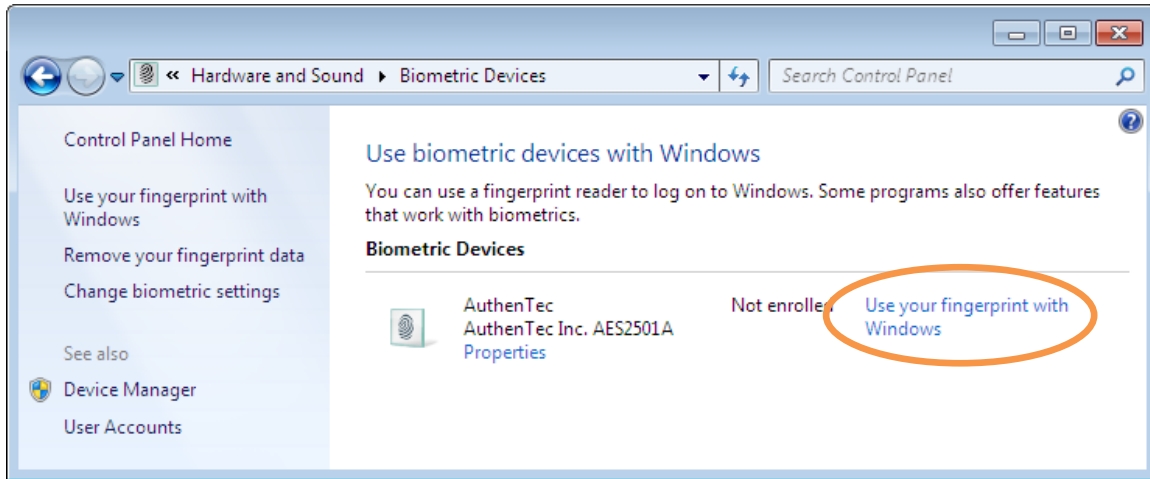
3 FINGERPRINT REGISTRATION

This section describes the process to register your fingerprints to be used as your Windows credential.

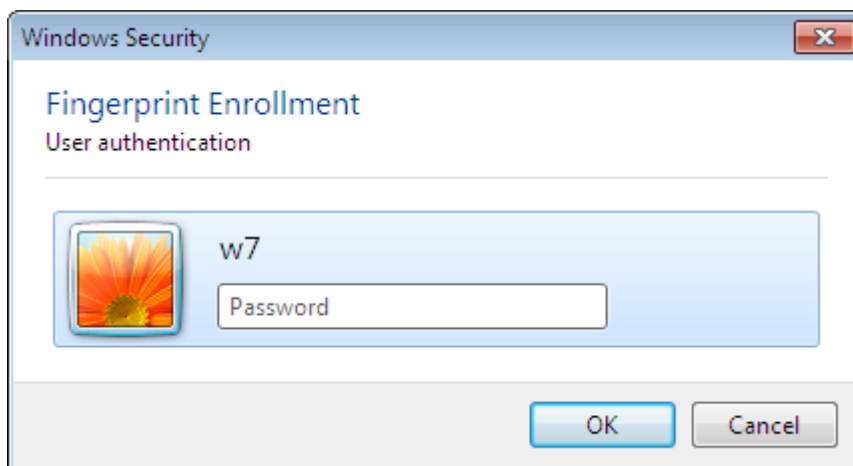
1. Open the Windows Control Panel (*Start→Control Panel*)
2. Open the Hardware and Sound settings



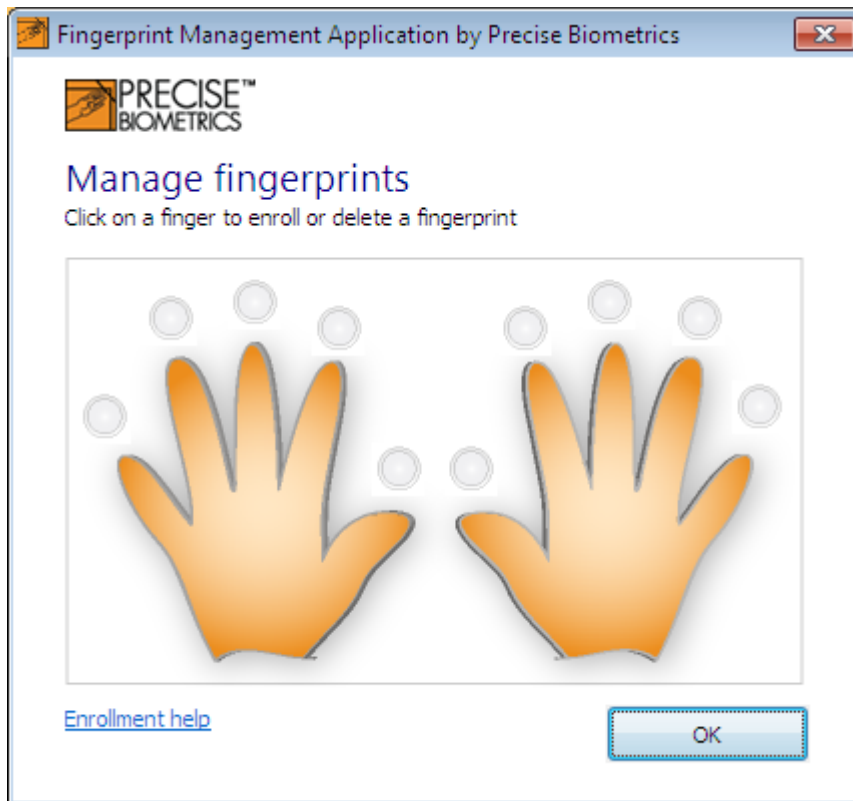
3. Click Biometric Devices



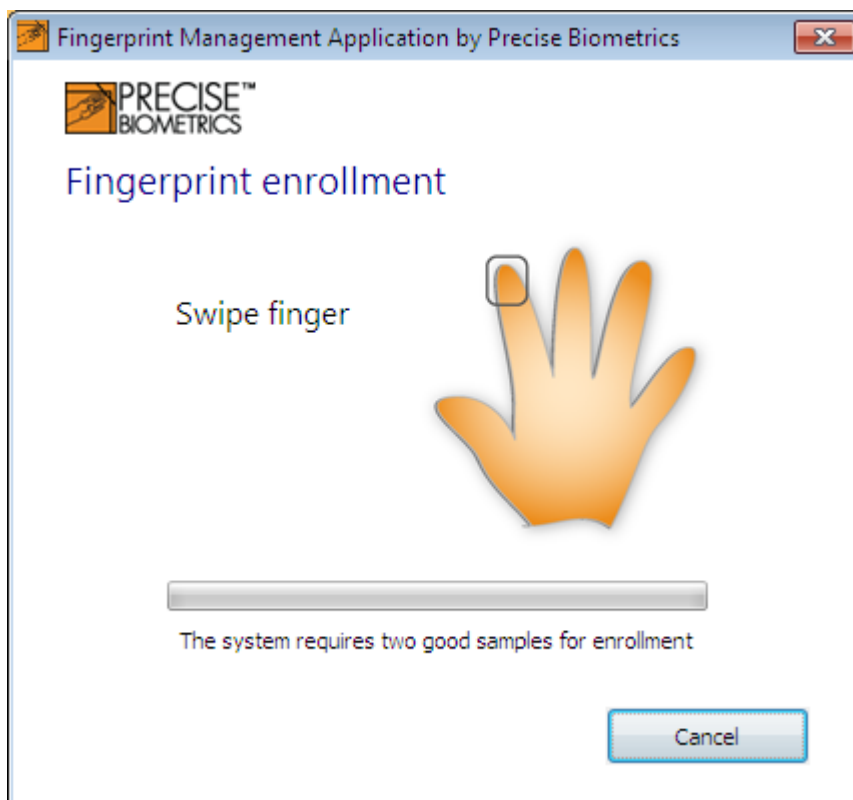
4. All currently connected fingerprint sensor are listed in this dialog. A text informs that no fingers have been registered with the Precise BioMatch™ Logon for Windows 7 credential provider. Click the “Use your fingerprint with Windows” text to open the Fingerprint Management Application (FMA) to register the first finger.



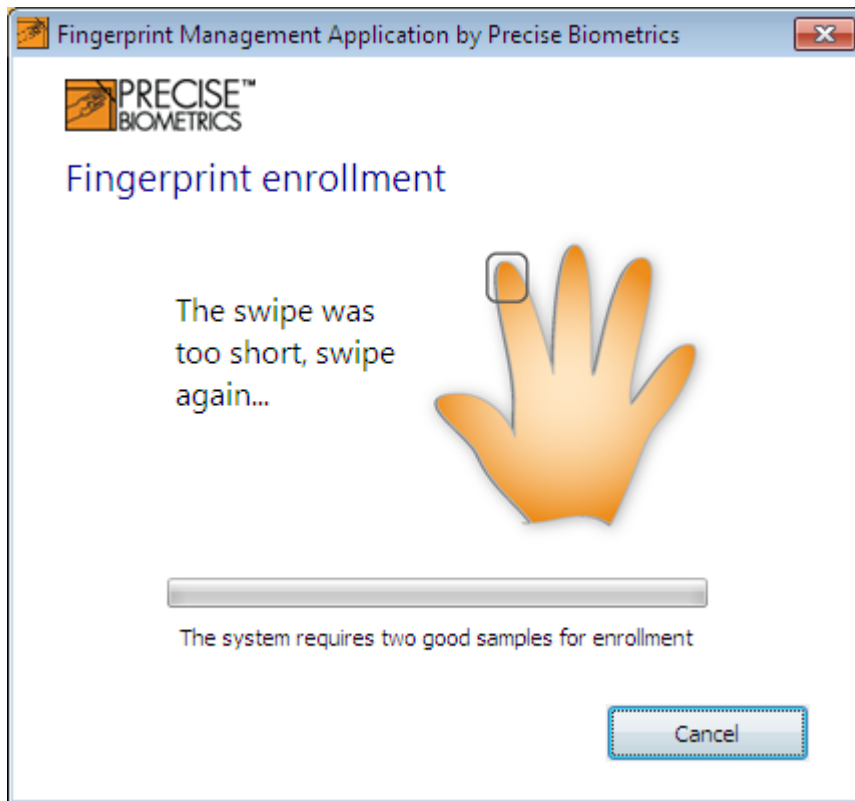
5. The user is prompted to enter the current Windows password before the user can access the fingerprint management application. Enter the Windows password and click the OK button.



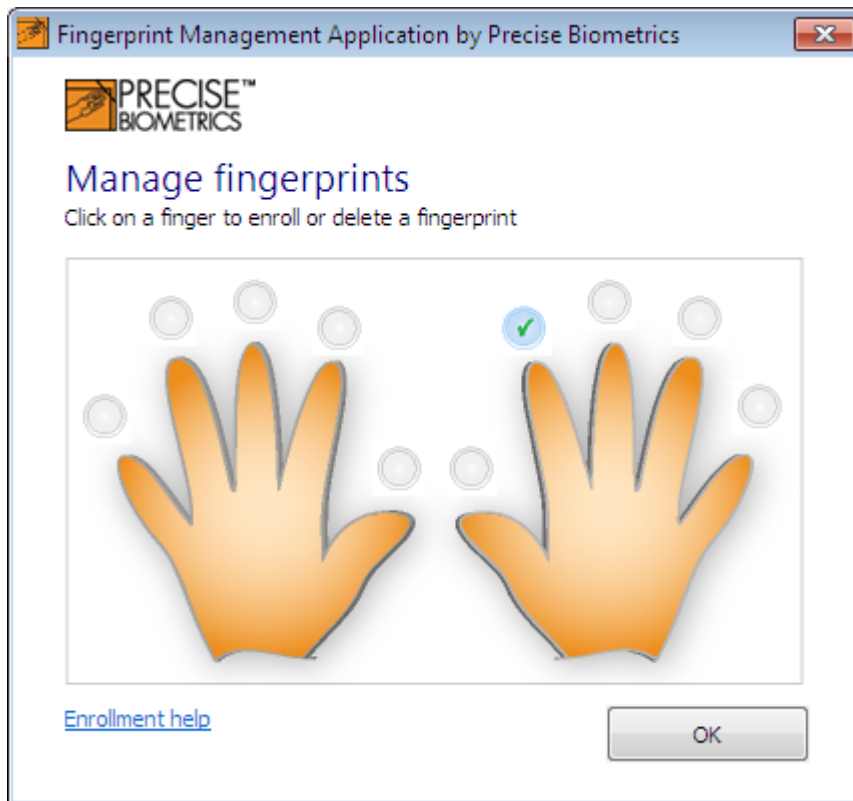
6. Select the finger to register by clicking on the corresponding button above the finger.



7. The circled finger indicates what finger that has been chosen to be registered. Depending on the type of reader that is used, the user will be prompted with different information. In this case a line/swipe area sensor is used and the user is prompted to swipe the finger on the sensor. The text under the progress bar shows how many good quality samples of the same fingerprint that is required in order to assure that the quality of the registered finger is good enough.



8. If the quality of the fingerprint is not sufficient the program will show a message to guide the user. It is crucial that the quality of the registered finger is of good quality to ensure that the performance when using the fingers later is as good as possible.



9. After capturing two good samples the finger is registered. Click on the circle above another finger to enroll that finger as well. It is recommended to enroll at least two fingers in case one finger is damaged or unusable due to a wound, scar or similar. It is possible to register all ten fingers if wanted.

4 USING YOUR FINGERPRINT

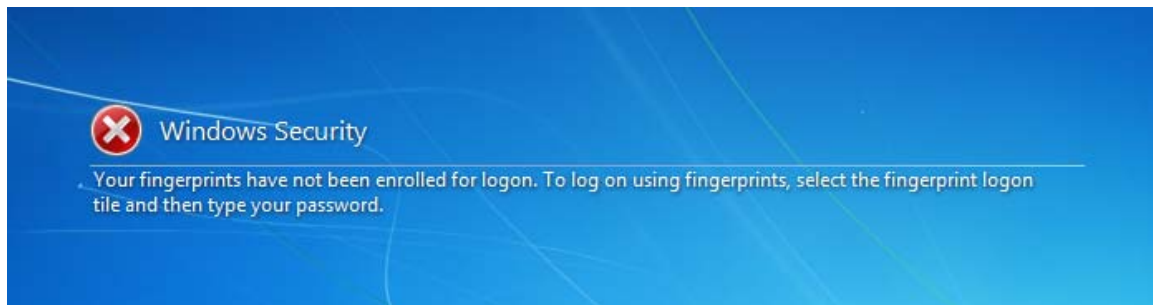
This section describes how to start using fingerprint biometry in Windows 7 and how to use your fingerprint to logon and unlock your computer.

4.1 First Time Usage

1. The first time fingerprint biometry is used in Windows 7 the user will need to enable the functionality with the Windows password.



2. Swipe/place a registered finger on the fingerprint sensor at the Windows Logon screen.



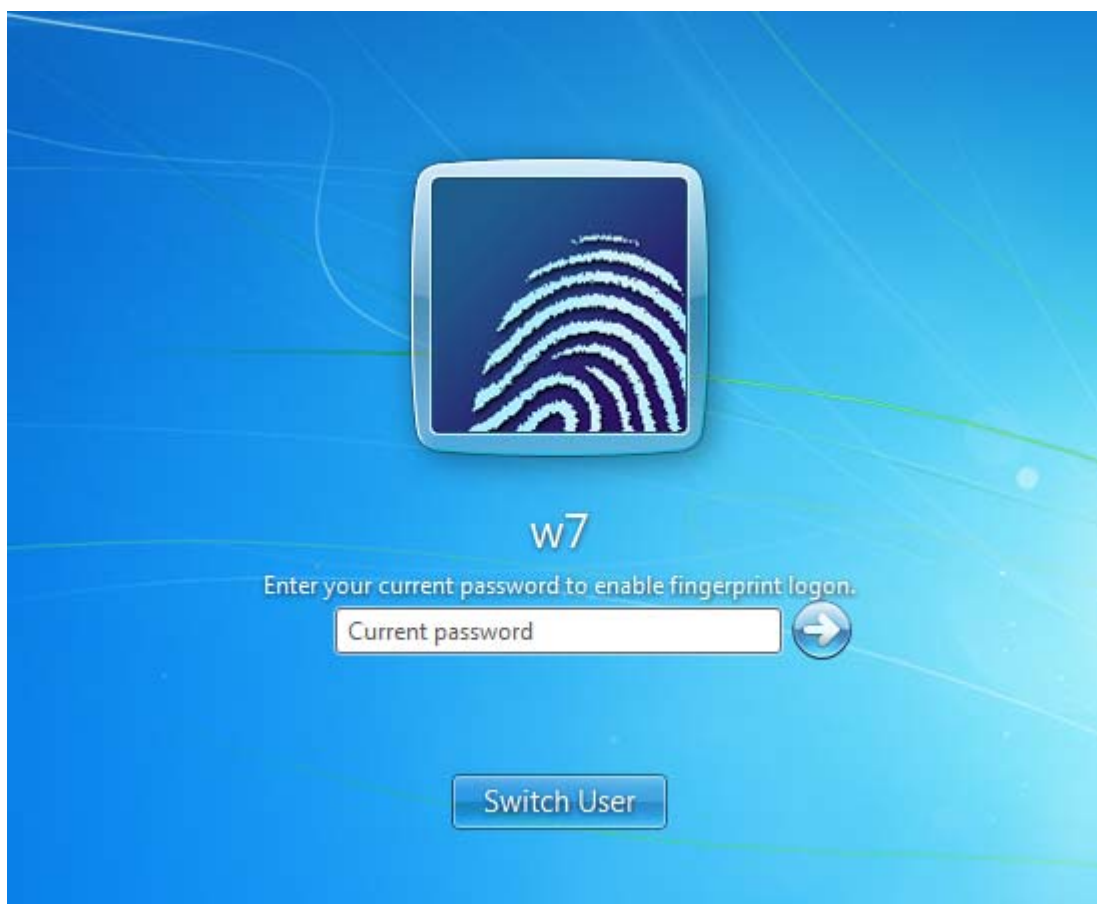
3. The following screen indicates that the finger matched a fingerprint stored in the Windows database but that the system needs to enable the biometric functionality – Click the OK button.



4. Click the Switch User button to display all users and credential providers.



5. Click the Fingerprint tile.



6. Enter the Windows password to enable fingerprint logon on this computer for the current user.

4.2 Logon and Unlock



1. The user can logon to Windows or unlock a Windows session by simply swiping/placing any registered finger on the fingerprint sensor.
2. At successful fingerprint verification, the tile will momentarily shift to green color and the user will be logged on.

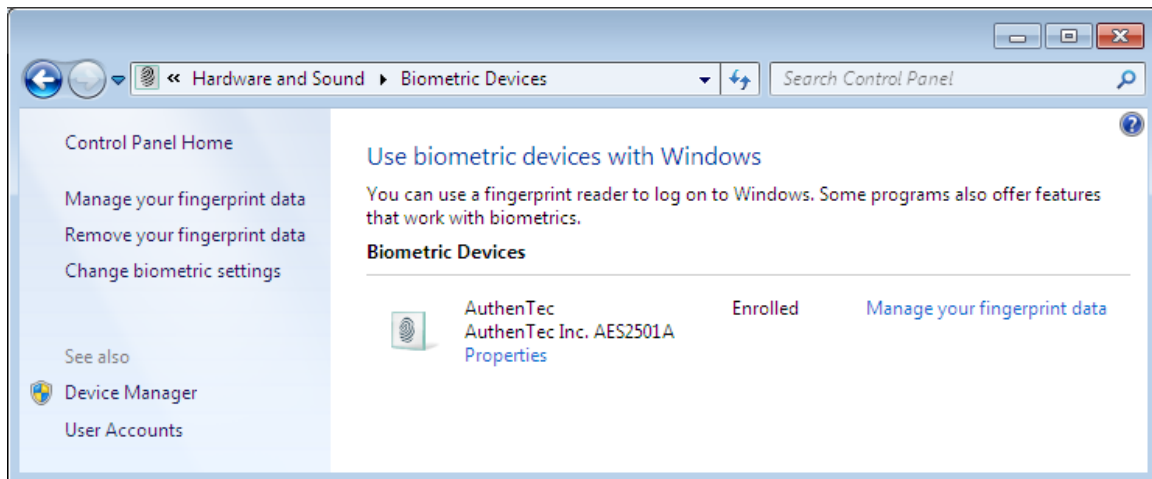


3. If a finger that has not been registered is presented to the system or the quality of the fingerprint is insufficient the following screen is displayed. The user can try again, try a different finger or press the Other Credentials button to logon using a password.

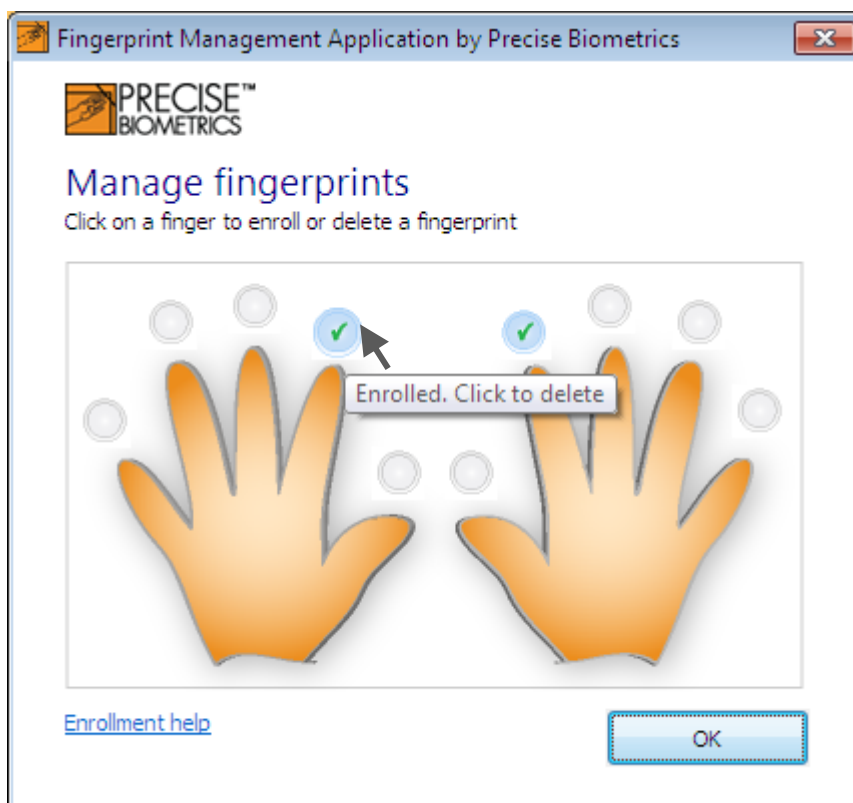
5 FINGERPRINT REMOVAL

The following steps describe how to remove a currently registered fingerprint:

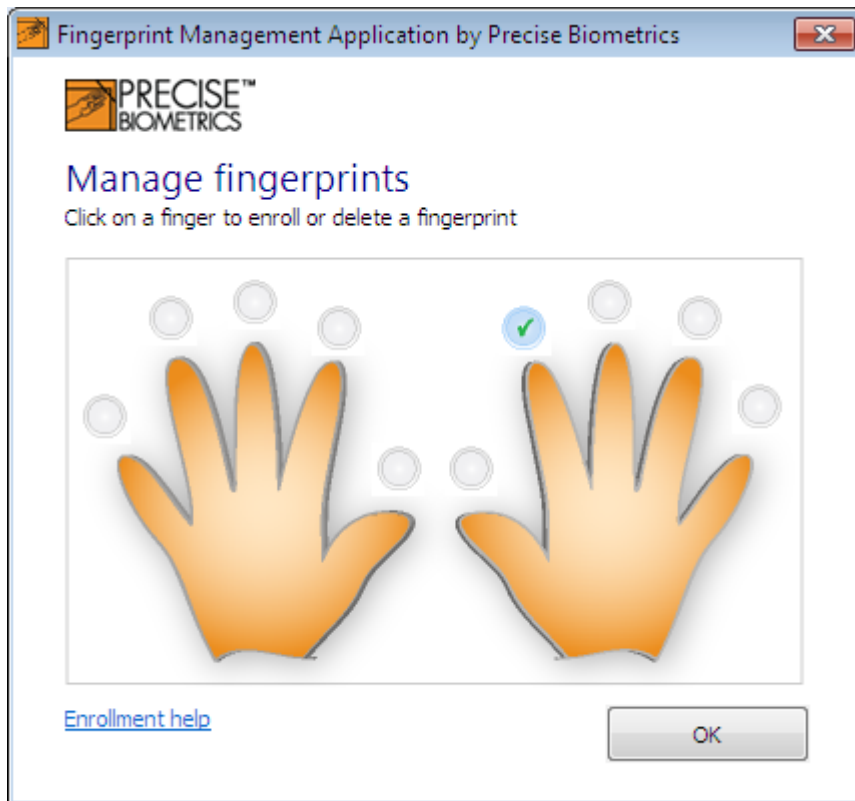
1. Open the Windows Control Panel
2. Open the Hardware and Sound settings
3. Open Biometric Devices



4. The dialog indicates that the currently logged on users has registered fingers. Click “Manage your fingerprint data” to open the Fingerprint Management Application.
5. Enter the user password and click OK.



6. The checked buttons indicate what fingers that are currently registered. To remove a finger just click on the checked button above the finger you want to remove.

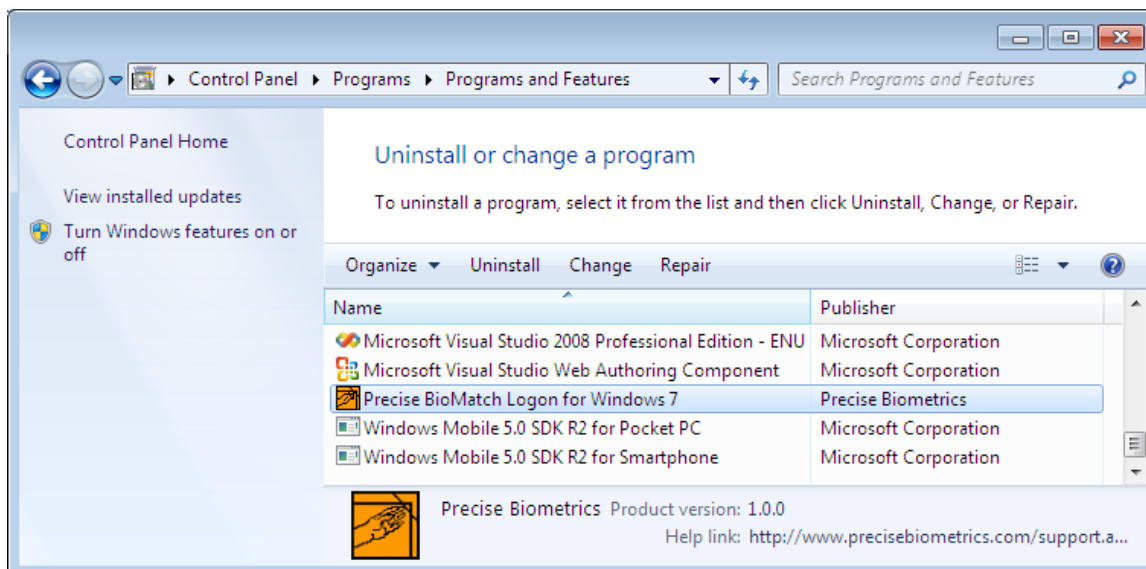


7. The finger has been unregistered and can no longer be used as a Windows credential. Click additional fingers to either remove old fingerprints or to register a new.

6 UNINSTALLATION

The following steps describe how to uninstall Precise BioMatch™ Logon for Windows 7:

1. Open the Windows Control Panel
2. Open Programs / Uninstall a program

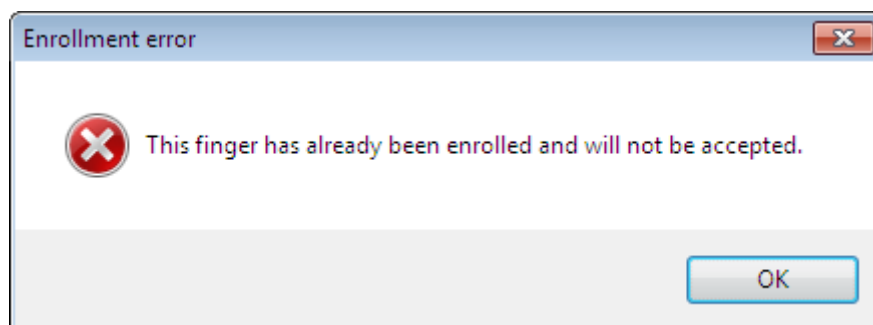


3. Select Precise BioMatch™ Logon for Windows 7 in the list and click Uninstall.
4. Precise BioMatch Logon for Windows 7 is removed and all registered fingerprints are removed.

7 TROUBLESHOOTING

This section describes possible problems that may arise.

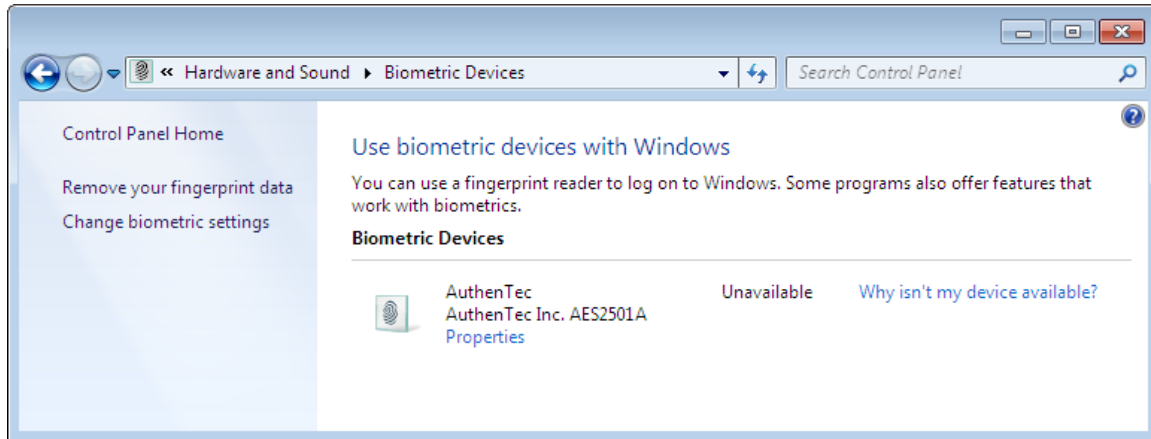
7.1 Registering the same fingerprint twice



This dialog is displayed when attempting to register a finger that has already been registered. During registration the finger to be registered is

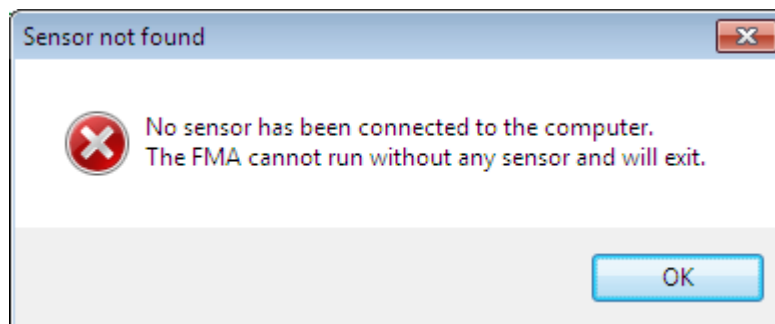
compared to all other fingers in the database to ensure that no duplicates are found.

7.2 Why isn't my device available?



The status of the fingerprint device / database can be in the Unavailable state for several different reasons. The most common is that the biometric service is not running or if a different biometric service provider has been installed on top of Precise BioMatch™ for Windows 7. Start the biometric service and / or re-install Precise BioMatch™ for Windows 7. Note that the Biometric Device window is not updated automatically. Pressing F5 updates the status of the biometric device manually. Clicking the “Why isn't my device available?” will display other possible solutions to this problem.

7.3 No sensor attached



Attempting to start the Fingerprint Management Application directly with no sensor attached will display this message. Connect a supported Windows Biometric Framework sensor to the computer and start the Fingerprint Management Application from the Windows Control Panel.

8 SUPPORT

Some questions may be answered by the FAQ available on our web site www.precisebiometrics.com. To access the FAQ, select **Support** from the menu on the website.

The support pages provide access to:

- FAQ on Precise Biometrics products
- The latest Precise drivers
- The technical support case entry form

The technical support case entry form provides a gateway to Precise Biometrics customer support should the information on the FAQ pages be insufficient.